

How to run ABAQUS jobs on Purdue AAE servers

1. To connect to ECN host machines via a secure connection from an MS Windows machine that does not have SSH secure connection client software, please download PuTTY from the following website:

<http://www.chiark.greenend.org.uk/~sgtatham/putty/download.html>

PuTTY Download Page

[Home](#) | [Licence](#) | [FAQ](#) | [Docs](#) | [Download](#) | [Keys](#) | [Links](#)
[Mirrors](#) | [Updates](#) | [Feedback](#) | [Changes](#) | [Wishlist](#) | [Team](#)

Here are the PuTTY files themselves:

- PuTTY (the Telnet and SSH client itself)
- PSCP (an SCP client, i.e. command-line secure file copy)
- PSFTP (an SFTP client, i.e. general file transfer sessions much like FTP)
- PuTTYtel (a Telnet-only client)
- Plink (a command-line interface to the PuTTY back ends)
- Pageant (an SSH authentication agent for PuTTY, PSCP, PSFTP, and Plink)
- PuTTYgen (an RSA and DSA key generation utility).

LEGAL WARNING: Use of PuTTY, PSCP, PSFTP and Plink is illegal in countries where encryption is outlawed. I believe it is legal to use PuTTY, PSCP, PSFTP and Plink in England and Wales and in many other countries, but I am not a lawyer and so if in doubt you should seek legal advice before downloading it. You may find [this site](#) useful (it's a survey of cryptography laws in many countries) but I can't vouch for its correctness.

Use of the Telnet-only binary (PuTTYtel) is unrestricted by any cryptography laws.

There are cryptographic signatures available for all the files we offer below. We also supply cryptographically signed lists of checksums. To download our public keys and find out more about our signature policy, visit the [Keys page](#). If you need a Windows program to compute MD5 checksums, you could try the one at [this site](#). (This MD5 program is also cryptographically signed by its author.)

Binaries

The latest release version (beta 0.64). This will generally be a version I think is reasonably likely to work well. If you have a problem with the release version, it might be worth trying out the latest development snapshot (below) to see if I've already fixed the bug, before reporting it to me.

For Windows on Intel x86

PuTTY:	putty.exe	(or by FTP)	(RSA sig)	(DSA sig)
PuTTYtel:	puttytel.exe	(or by FTP)	(RSA sig)	(DSA sig)
PSCP:	pscp.exe	(or by FTP)	(RSA sig)	(DSA sig)
PSFTP:	psftp.exe	(or by FTP)	(RSA sig)	(DSA sig)
Plink:	plink.exe	(or by FTP)	(RSA sig)	(DSA sig)
Pageant:	pageant.exe	(or by FTP)	(RSA sig)	(DSA sig)
PuTTYgen:	puttygen.exe	(or by FTP)	(RSA sig)	(DSA sig)

A .ZIP file containing all the binaries (except PuTTYtel), and also the help files

Zip file: [putty.zip](#) (or by FTP) (RSA sig) (DSA sig)

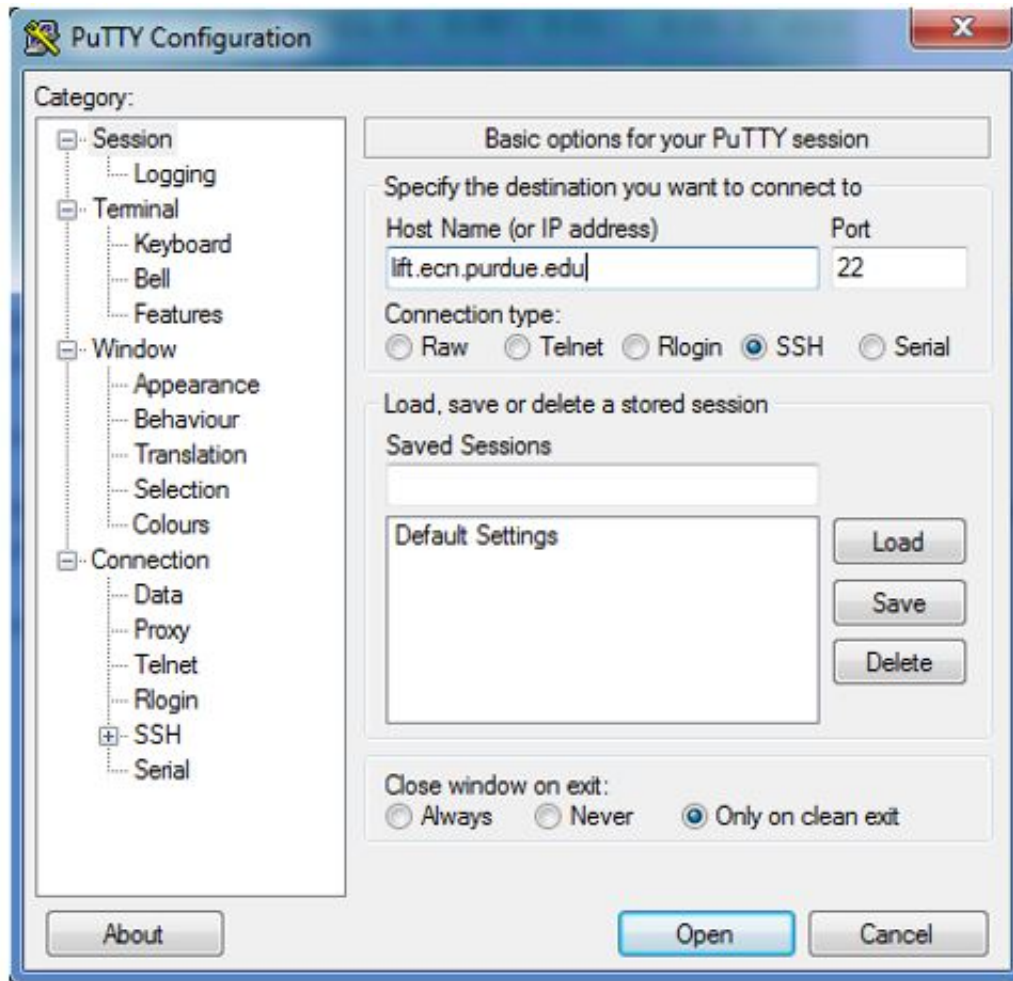
A Windows installer for everything except PuTTYtel

Installer: [putty-0.64-installer.exe](#) (or by FTP) (RSA sig) (DSA sig)

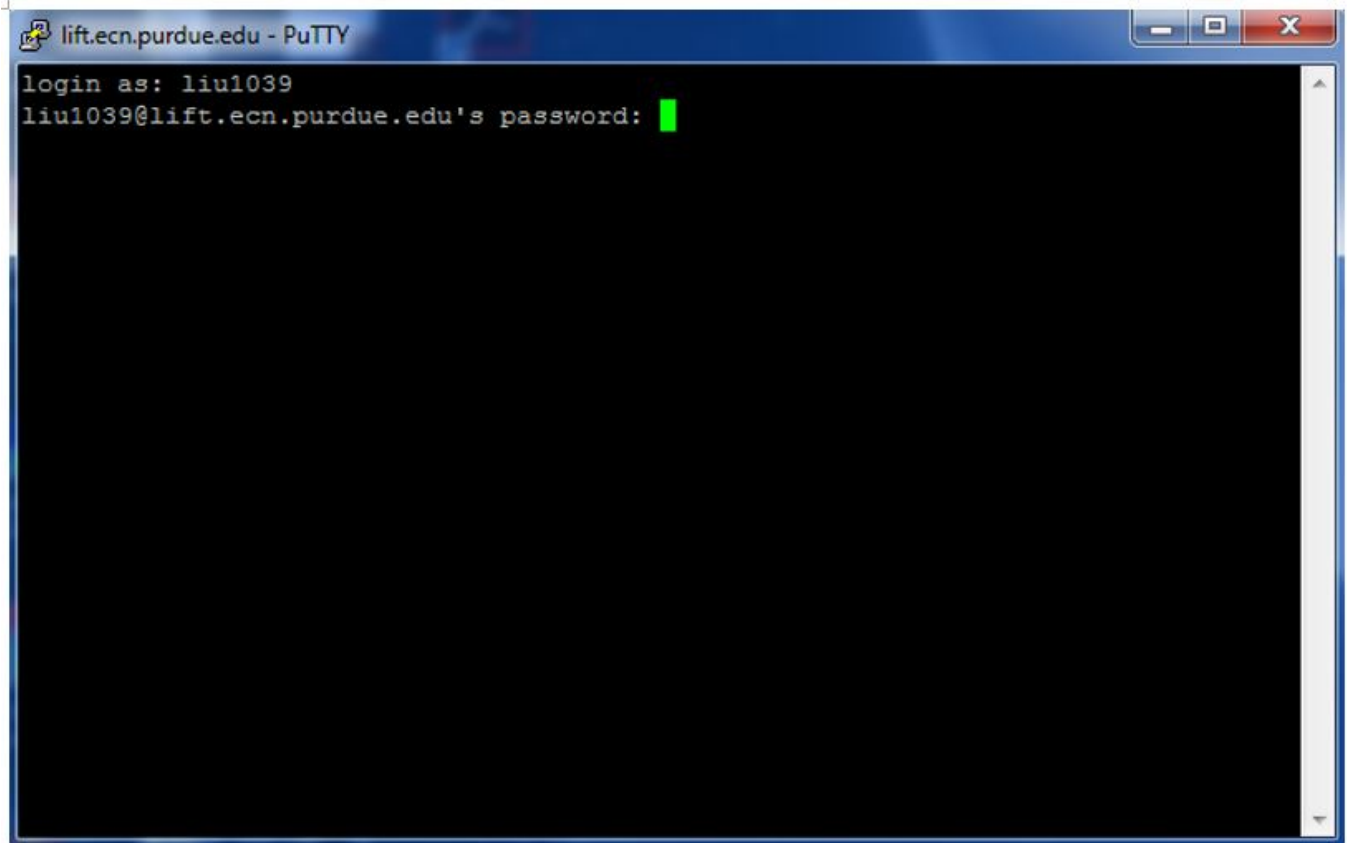
Checksums for all the above files

2. Run Putty, and type a server's IP address under Host Name, for example, lift.ecn.purdue.edu, then click Open. The list of servers can be found at the following page, to choose another server, one only needs to replace lift with the corresponding server name from the list on the following website.

https://engineering.purdue.edu/AAE/AboutUs/Help/server_status/compute_servers.html



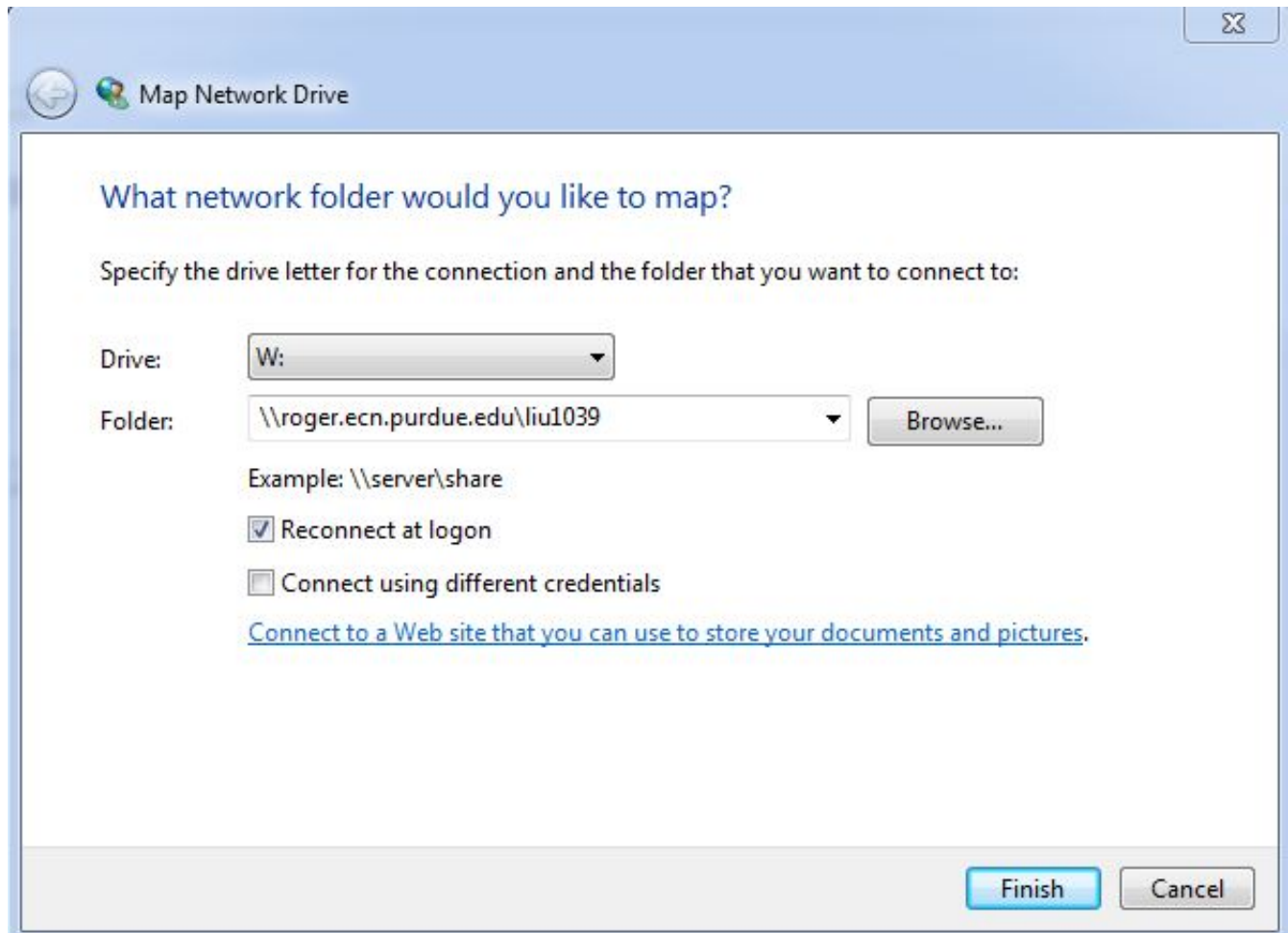
3. Login using your Purdue career account name and password. Note that password would not show on the screen as you type the password.



4. Before run the ABAQUS job, make sure that your ABAQUS job file (.inp), say "Job-1.inp" is available at the root directory of ECN's disk drive because it is the default working directory. Then type "abaqus job=Job-1" will simply run the job; add "interactive" at the end of the command is optional and is to show the progress on the screen; add "terminate" is to terminate the job; add "cpus=20" is to run using parallel computing with 20 CPUs.

```
-bash-4.1$ abaqus job=Job-1 interactive
```

(Optional) To map your ECN's disk drive remotely, click Map network drive at your computer, type the address as follows, replace "liu1039" with your Purdue career account name, use your Purdue career account name and password to login.



Further information can be found at:

<https://engineering.purdue.edu/ECN/Support/KB/Docs/RunningAbaqusonServer>